

# PROJECTED PLAN

**DAY 1: LA → Joshua Tree → Scottsdale, Arizona (TUES 10/3)**

**Weather:** 98/72

Total Travel: 6-7 hours without stopping

LA to Scottsdale

Miles: 400

**Gas Estimate: \$40**

**Helpful Blog:**

<http://apassionandapassport.com/2016/05/utah-national-parks-one-week/>

(potentially do their trip backwards)

**MORNING:** Drive to Scottsdale, AZ: 6-7 hours

**CABAZON DINOSAURS IN PALM SPRINGS**

**Fee: \$12/person** to go inside dinosaur/see exhibit



**Hole-in-the-Rock, 625 N Galvin Pkwy, Phoenix, AZ 85008, Rock Papago Park**

(10 minutes from Jess.... If not too tired after drive)



**Goldfield Arizona Ghost Town**

(40 minutes East from Jess.... Would only have time for this or Hole in the Rock)

(also most of it closes by 5pm....we probably wouldn't get there by then realistically)

**Merchants Open From: 10am-5pm**

**Bakery Open: 9am-5pm**

**Saloon Open Daily: 11am-9pm**

---

**STAY: Jessica's Place: \$0**

## DAY 2 → Scottsdale, AZ → Sedona, Arizona →Williams, Arizona (WED 10/4)

**Weather:** Sedona: 81/57 Williams: 71/42

Total Travel: 3.5 - 4 hours (no stopping)

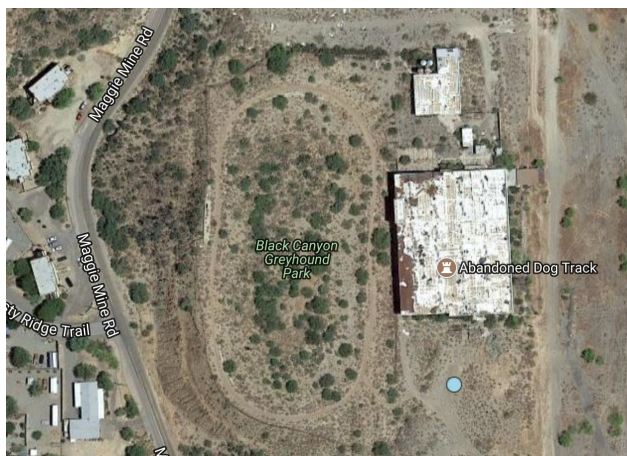
Scottsdale, Az to Sedona: about 2 hours

Sedona to Willams, AZ 1 hr 30 min.

Miles: 185 + 136 miles extra to go to Two Guns & Back to Williams

**Gas Estimate: \$20+ \$13 extra**

**BLACK CANYON, AZ (on the way to Sedona/right off the highway).... 1 hour into drive**



Abandoned Black Canyon Greyhound Dog Track ...HERE GOES SPARKYYYYY

**Latitude: 34.086538 Longitude: -112.148319**

32955 S Maggie Mine Rd,

Black Canyon City, AZ 85324



## SEDONA, ARIZONA



Devils Bridge (15 minutes to hike/walk to)



Only McDonalds with Blue Arches in the World

Visitor Center: 331 Forest Rd, Sedona, AZ 86336

Monday – Sunday, 8.30 am – 5.00 pm

## WILLAMS, ARIZONA (EXPLORE/SUGGESTIONS)



World famous steakhouse from the 1940's:

<http://rods-steakhouse.com/menu.htm>



Bearizona Wildlife Park Open: 8am-4pm

**\$20 per person 2 (possible option if time)**

Wild Ride Bus Tour Times\*

10:00 a.m. 3:30pm

12:00 p.m.

2:00 p.m.

POSSIBILITY! if we have time/bored with Williams, AZ: Flagstaff: 30 minute from Williams away and Two Guns Ghost Town 1 hr from Williams



**FLAGSTAFF, AZ (FEE: \$20car/\$0 National Parks Pass)**



Wupatki National Monument (so this actually is not on the way it is about 40 minutes north and out of the way if we want to do Two Guns)

**Visitor Center:**

The visitor center is near milepost 21 on the Sunset Crater-Wupatki scenic loop road. From Flagstaff, take US 89 north for 12 miles (19km), turn right at sign for Sunset Crater Volcano and Wupatki National Monuments. The visitor center is 21 miles (34km) from this junction  
Open daily from 9:00 a.m. until 5:00 p.m



**TWO GUNS, AZ GHOSTTOWN**

Directions: Two Guns is just off of I-40 at exit 230 between [Flagstaff](#), and Meteor City. After exiting, turn left, cross I-40 towards the site.

**STAY:**

**Wednesday October 4, 2017** (info and cancellation policy) [hotels.com]

Canyon Country Inn, Williams, AZ, 866-539-5096 **TOTAL: \$112.40**

- \$5 cancellation fee on or before 6 PM on October 1, 2017
- 2 double beds, parking, wifi, breakfast

## DAY 3: WILLIAMS, AZ → BEDROCK CITY FLINESTONES → GRAND CANYON SOUTH RIM → PAGE, ARIZONA (THURS 10/5)

**Weather:** Page:76/52

Total Travel: 3hr. 40 min (no stopping)

Williams, AZ to Bedrock City: 35 minutes

Bedrock City to South Rim Grand Canyon: 40 minutes

South Rim Grand Canyon to Page, AZ: 2 hr. 30 minutes

Miles: 193

**Gas Estimate: \$20**

**MORNING:** Drive to Bedrock City, AZ: **35 minutes**

### BEDROCK CITY, AZ

Flintstones Bedrock City, 101 US-180, Williams, AZ 86046, USA or State Rt 64 & Hwy 180

Valle, AZ 86046



Abandoned Flinestone's Theme Park (abandoned..allow 1 hour for pictures)

**MORNING:** Drive to Grand Canyon South Rim: **40 minutes**

**AFTERNOON:**

GRAND CANYON SOUTH RIM, AZ ....**COST: \$20/car/\$0 National Parks Pass**

10 Albright Ave, Grand Canyon, AZ 86023

### The South Rim and Desert View

Open Left to right: visitor center parking and plaza overview, visitor center and outdoor exhibits, people watching sunset at Mather Point



Left to right: 1) Visitor center plaza & parking 2) Visitor center's outdoor exhibits, 3) Watching sunset at nearby Mather Point.

**South Rim Visitor Center: S Entrance Rd, Grand Canyon, AZ 86023**  
**9am-6pm**

**AFTER GRAND CANYON:** Drive **2.5 hours** to Page, Arizona  
Miles: 132

#### **STAY:**

**Thursday October 5, 2017** (info and cancellation policy) [booking.com]

America's Best Value Inn: 75 South 7th Avenue, Page, AZ, 86040, 928-645-2858 **TOTAL:**  
**\$154.12**

- **FREE cancellation before 11:59 PM on October 1, 2017**
- 2 queen beds, parking, wifi, breakfast



## DAY 4: PAGE, ARIZONA and MONUMENT VALLEY (FRI 10/6)

**Weather:** Page:76/52 and Monument Valley: 74/50

**PAGE, AZ**



Antelope Canyon : Antelope Canyon Park Office, P.O. Box 4803,Page, AZ, 86040

Tour Information: **BOOK TICKETS AHEAD OF TIME!!! FEE: up to \$60 PER PERSON**

**Glen Canyon Park:\$0**



Horseshoe Bend (10 minute hike-½ mile)

**AFTER HORSESHOE BEND:** drive **2.2 hours** to Monument Valley (135 miles)

**Monument Valley Visitor Center : P.O. Box 360289, Monument Valley, UT, 84536**

**Oct. 1-Apr. 30 -8am to 5pm everyday**

Off Season (Oct 1 - Apr 30) 8:00am - 4:30pm



Forrest Gump Sign in Monument Valley (Located on UT-163 at mile marker 13.)



Drive thru Route 163 for the scenic route of Monument Valley and to the Mexican Hat. **45 minutes/32 miles)**



Mexican Hat, Utah

Drive from Mexican Hat to Monticello, UT

Then drive from Mexican Hat to Monticello, UT (2 hours) (103 miles)

Miles: 238

**Gas Estimate: \$20**

**Friday October 6, 2017** (info and cancellation policy) [hotels.com]

Blue Mountain HorseHead Inn: 232 North Main St., Monticello, UT, 84535, 435-587-2251

**TOTAL: \$90.00**

- **FREE cancellation before 6PM on October 4, 2017**
- 2 double beds, free parking, wifi

## DAY 5: FOUR CORNERS MONUMENT, DEAD HORSE STATE PARK (SAT 10/7)

**Weather:** Four Corners: 68/44, Dead Horse State Park: 77/47

Up early: drive from Monticello, UT to Four Corners

Four Corners (1 hr 40 min/90 miles)



Four Corners Monument (be in 4 states at once)

Drive From Four Corners Monument to Dead Horse State Park (3hr. 15 min/175miles)



Dead Horse State Park (Dead Horse Point Scenic Drive) **FEE: \$15 per car** (Map below)



## Location

Drive 9 miles (14.5 km) northwest of Moab on US 191 and then 23 (37 km) miles southwest on Utah 313 to the end of the highway. Driving time to the visitor center from Moab is roughly 45 minutes.



Drive from Dead Horse State Park to Moab, Utah **40 minutes/30 miles**

Miles: 305 +

**Gas Estimate: about \$25**

**Saturday October 7 to Tuesday October 10, 2017**(info and cancellation policy) [hotels.com]

Motel Super 8: 889 N. Main St, Moab, Utah, 84532, 4352598868 **TOTAL: \$492.00**

- **FREE cancellation until 10/6/2017 before 4pm**
- 2 queen beds, free parking, wifi, breakfast

## DAY 6 ARCHES NATIONAL PARK (SUN 10/8) FEE: \$25/car/\$0

### National Parks Pass

**Weather:** Arches:77/47

Get up early and drive from Moab, UT to Arches National Park

Miles: 20 there 20 back

**Gas Estimate: \$10**

**Arches Visitor Center: Entrance Station, Park Headquarters, Arches National Park, UT 84532, 9am-4pm**



**Delicate Arch in Arches National Park (3 mile hike roundtrip) :Trailhead:([38.735889](#),  
[-109.520618](#))**



**Devils Garden in Arches National Park (1.56 mile roundtrip)**

**Trailhead: ([38.783166](#), [-109.595171](#))**

This is a nice trail, paved, wide, and level, as good as it gets in the barren Arches landscape. The improved Devils Garden Trail ends at Landscape Arch; a Primitive Loop Trail extends from there, providing access to many of the area's most spectacular structures.



**Balanced Rock in Arches National Park (15 min. hike)**

**To get to the trailhead:** From the visitor center, drive 9.2 miles up Park Avenue to the turnout for Balanced Rock. You will see Balanced Rock coming from miles away. Trailhead address: Arches Entrance Road (Park Avenue), Arches National Park, Moab, UT84532. Trailhead coordinates: 38.70176, -109.56605 (38° 42' 06.33"N 109° 33' 57.78"W)



**Sand Dune Arch in Arches National Park (easy half mile hike)**

[\(38.764138, -109.580839\)](#)

The trail up to Sand Dune Arch becomes quite narrow for a few hundred yards, a small slot canyon. It continues past the arch for a little way before choking up and becoming impassable.

**Saturday October 7 to Tuesday October 10, 2017**(info and cancellation policy) [hotels.com]

Motel Super 8: 889 N. Main St, Moab, Utah, 84532, 4352598868 **TOTAL: \$492.00**

- **FREE cancellation until 10/6/2017 before 4pm**
- 2 queen beds, free parking, wifi, breakfast



## DAY 7 CANYONLANDS NATIONAL PARK (MON. 10/9) FEE:

**\$25/car /\$0 National Parks Pass**(Island in the Sky District most recommended)

**Weather:** Canyonlands:73/41

Get up early and drive from Moab, UT to Canyonland National Park

Miles: 30 there and 30 back

**Gas Estimate: \$8**

**Visitor Center: 8am-5pm**



Mesa Arch, Canyonland National Park (Hike is ½ mile roundtrip)

### Mesa Arch

[\(38.388051, -109.863537\)](#)

The arch is located right on the rim of the plateau. After taking in the view, and taking photos, continue the easy loop trail to return to your car, or backtrack and return the way you came in.

### Trailhead

[\(38.3892, -109.868\)](#)

The trailhead is at a wide parking area located along Grand View Point Road. The short trail is well marked and easy to follow. It takes you to the edge of the plateau, where you have an expansive view of the countryside.

**To get to the trailhead:** From the Island in the Sky Visitor Center, drive south for 12 miles to road's end at Grand View Overlook.

Trailhead address: Grand View Point Road, Canyonlands National Park, Moab, UT 84532

Trailhead coordinates: 38.3108, -109.8566 (38° 18' 38.9"N 109° 51' 23.8"W)



Grand View Point Overlook (2 miles roundtrip)

**To get to the trailhead:** From the Island in the Sky Visitor Center, drive south for 12 miles to road's end at Grand View Overlook.

Trailhead address: Grand View Point Road, Canyonlands National Park, Moab, UT 84532

Trailhead coordinates: 38.3108, -109.8566 (38° 18' 38.9"N 109° 51' 23.8"W)

**Saturday October 7 to Tuesday October 10, 2017**(info and cancellation policy) [hotels.com]

Motel Super 8: 889 N. Main St, Moab, Utah, 84532, 4352598868 **TOTAL: \$492.00**

- **FREE cancellation until 10/6/2017 before 4pm**
- 2 queen beds, free parking, wifi, breakfast

## DAY 8: CAPITAL REEF NATIONAL PARK (TUES 10/10) FEE:

**\$10/car (\$0 WITH PASS)**

**Weather:** Fruita, Utah:70/37

Up early: Drive **2hr. 35min/147miles** from Moab Utah to Fruita Utah

**Visitor Center: 16 Scenic Dr, Torrey, UT 84775 , 8am-4:30pm**



Capitol Reef

THE Giffard House: pie and massive cinnamon buns Fruita, UTAH

The Gifford Homestead is located 1 mile (1.6 km) south of the visitor center on the Scenic Drive and is open 8-5 daily (possible extended hours in the summer) from March 14 (Pi Day) to October 31 (closing dates may vary). A small parking lot is adjacent to the Gifford yard.







Gooseneck's Overlook



Cathedral Valley

Drive **2hr 40 min./144miles** to Bryce City, Utah

Total mileage: about 270+

**Gas Estimate: \$25**

**Tuesday October 10, 2017**(info and cancellation policy)[hotels.com]

Best Western Ruby's Inn: 26 South Main St., Bryce Canyon, Utah, 84764, 4358345341 **TOTAL:**  
**\$169.00**

- **FREE cancellation until 10/10/2017 before 4pm**
- 2 queen beds, free parking, wifi

**DAY 9: BRYCE CANYON (WED 10/11) FEE: \$30/car/\$0 National Parks**

**Pass**

**Weather:** Page:60/33

**STOP AT VISITORS CENTER FOR MAP \*\*\*\*START EARLY!!!!**

**Visitor Center: Hwy 63/1 Park Rd Bryce Canyon, UT 84764 8am-8pm**



BRYCE CANYON AMBITHEATRE IN WINTER - Inspiration Point at Sunrise - Bryce Canyon National Park - Utah

**All DRIVEABLE POINTS**

**Inspiration Point**



**Bryce Point**





Agua Canyon



Rainbow Point (highest point 9,000 feet elevation)



Black Birch Canyon





Ponderosa Point



Sunrise Point

LUNCH SUGGESTION: BRYCE CANYON LODGE

Queens Garden/Navajo Loop Trail Hike : 2.7 miles total

If you're looking for a tad easier time, start at Sunset Point, hike down the Navajo Trail (much steeper) and then up Queens Garden (less steep).

**Gas Estimate: \$18**

Drive to St. George, UTAH **2hr. 15 min/140 miles**  
(stay at danielle's 2 nights)

## DAY 10: ZION NATIONAL PARK & ST. GEORGE (THURS

**10/12** ) **FEE: \$30/car/\$0 National Parks Pass**

**Weather:** Zion:80/50

**Visitor Center: 118 Lion Blvd**

**Springdale, UT 84767 8am-5pm**

Get up early and drive from St. George to Zion: **1hr./40 miles**



Zion---The Narrows

Drive Zion to St. George: **1 hr./40 miles**

**Gas Estimate: \$10**

### ST GEORGE, UTAH



Sand Hollow State Park, 10 minutes east of St. George **(FEE: \$10 per vehicle)**

## DAY 11: DRIVE HOME FROM ST. GEORGE TO LA( FRI 10/13)

**Weather:** St. George:79/51

Get up early and drive from St. George to Vegas: **2 hours/120 miles**

**Gas Estimate: \$12**

Drive from Vegas to Los Angeles: **4 hours and 12 minutes/240 miles**

**Gas Estimate: \$23**

### LAS VEGAS, NEVADA



Seven Magic Mountains

SAME EXIT



**Peggy Sue's 50's Diner**  
35654 Yermo Road  
Yermo, CA 92398



**36600 Ghost Town Rd, Yermo, CA 92398-0406**



-----Peggy Sues to Dinosaur Park = 45 minutes-----



**Abandoned Dinosaur Park**  
**16050 Ocotilla Rd, Apple Valley, CA 92307, USA**

#### OTHER THINGS TO CONSIDER:

- Stay arrangements? Budget per night? Try to stay around \$150 night/\$50 per person
- How to pay for it all? Use one credit card for sharing purchases....stays, gas, park fees, etc.
  - Pay at the end? Split 3 ways?
- Drive time? Okay with splitting time equally? Who is more comfortable driving highways vs. middle of nowhere, mornings vs. night driving
- Pack only duffle bags so we can fit and stuff more into the trunk
- Look up all park visitor center addresses
- Plan to purchase National Parks Pass at Grand Canyon \$80... this can take anywhere from 7-21 days to arrive if you purchase online
  - Two signatures can go on it ...good for a year at all national parks and monuments

## ROOM INFO

**Wednesday October 4, 2017** (info and cancellation policy) [hotels.com]

Canyon Country Inn, Williams, AZ, 866-539-5096 **TOTAL: \$112.40**

- **\$5 cancellation fee on or before 6 PM on October 1, 2017**
- 2 double beds, parking, wifi, breakfast

**Thursday October 5, 2017** (info and cancellation policy) [booking.com]

America's Best Value Inn: 75 South 7th Avenue, Page, AZ, 86040, 928-645-2858 **TOTAL: \$154.12**

- **FREE cancellation before 11:59 PM on October 1, 2017**
- 2 queen beds, parking, wifi, breakfast

**Friday October 6, 2017** (info and cancellation policy) [hotels.com]

Blue Mountain HorseHead Inn: 232 North Main St., Monticello, UT, 84535, 435-587-2251 **TOTAL: \$90.00**

- **FREE cancellation before 6PM on October 4, 2017**
- 2 double beds, free parking, wifi

**Saturday October 7 to Tuesday October 10, 2017**(info and cancellation policy) [hotels.com]

Motel Super 8: 889 N. Main St, Moab, Utah, 84532, 4352598868 **TOTAL: \$492.00**

- **FREE cancellation until 10/6/2017 before 4pm**
- 2 queen beds, free parking, wifi, breakfast

**Tuesday October 10, 2017**(info and cancellation policy)[hotels.com]

Best Western Ruby's Inn: 26 South Main St., Bryce Canyon, Utah, 84764, 4358345341 **TOTAL: \$169.00**

- **FREE cancellation until 10/10/2017 before 4pm**
- 2 queen beds, free parking, wifi

**Wednesday October 11, 2017 to Friday October 13, 2017**

**(NO ROOM BOOKED...POSSIBLY STAY AT DANIELLES HOUSE IN ST. GEORGE)**

ROOM TOTAL: \$1,017.52 ..... **\$340.00 per person**